



# Carbon Atlas

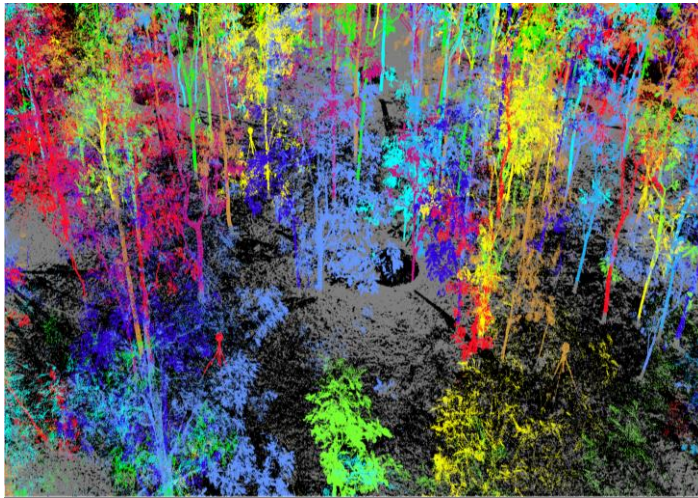
## The Carbon Digital MRV Platform

Friday, June 13, 2025 | 10:30 – 12:00 PM

**Kandasri Limpakom**

Deputy Executive Director, GISTDA

# Carbon Atlas



## Welcome to innovative remote sensing & AI-based carbon DMRV service.

With cutting-edge technology and expertise, we offer accurate and efficient solutions for unlocking your green and carbon economy.

### Key Benefits:

- **Approved Methodology:** Officially approved by TGO under the T-VER framework.
- **High Accuracy:** Built using > 1,000 field plots collected with 3D terrestrial laser scanning, ensuring robust biomass and carbon modeling with validated accuracy.
- **Lower Costs:** Cut MRV expenses by up to 70% through satellite-based remote sensing and automation.
- **Scalability:** Suitable for any project size—from a few rai to millions of hectares—enabling both smallholder and National-level initiatives..

### Applications:

- **Carbon Credit:** Generate field-scale carbon data aligned with TGO-approved methodologies for T-VER credits.
- **REDD+ and Forest Carbon:** Monitor and quantify forest carbon changes for conservation and restoration initiatives.
- **Insurance & Finance:** Provide insurers and financiers with trusted carbon data to underwrite or invest in green assets.
- **Government & Corporate:** Power national inventories and regional climate action plans with accurate, scalable carbon intelligence.



### Key Features:

- **Digital MRV System:** Advance satellite analytics and AI – powered remote sensing for fully automated carbon stock estimation.
- **Field Scale Carbon Estimation:** Accurate at the plot level for forests, farms, and agroforestry lands.
- **T-VER Ready Reports:** Outputs meet criteria and are ready for submission to the T-VER registry.
- **Smart Dashboard:** Track carbon removal, sequestration, and project performance in real time.
- **Open APIs:** Access MRV services and data directly via secure RESTful API.

### Key Areas:



Hill Evergreen Forest



Mixed deciduous Forest



Dry dipterocarp Forest



Mangrove Forest



Para Rubber Plantation

### How It Works:

- **Define Land Parcel:** Upload field boundary or use interactive map to select area, then automatically check geolocation criteria.
- **Run Models:** Process data and generate carbon estimates with TGO-approved models.
- **Review MRV Report:** Output includes carbon stock, emissions/removals, and credit potential aligned with T-VER.
- **Download or Connect via API:** Get data in report format or integrate via APIs for automated workflows.

### Contact Us:

For inquiries or to learn more about our tree carbon DMRV service, please contact us:

Phone: +66 2141 4444

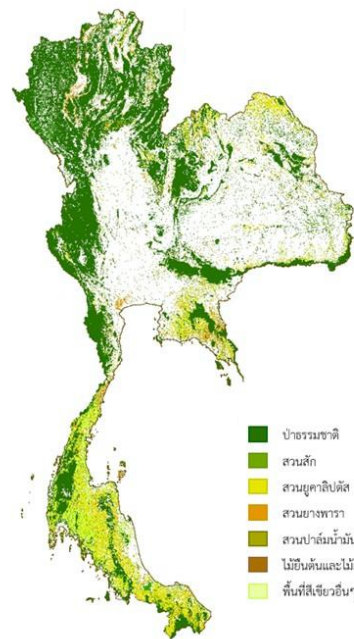
Email: [service@gistda.or.th](mailto:service@gistda.or.th)

Website: [www.gistda.or.th](http://www.gistda.or.th)

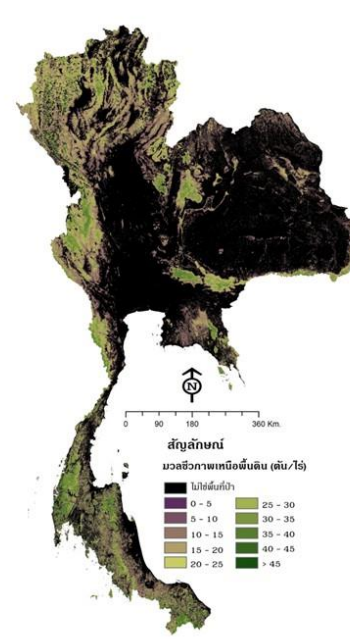
# Carbon Atlas



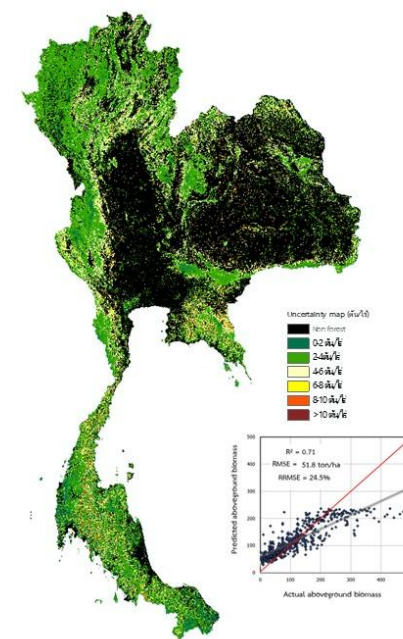
GISTDA



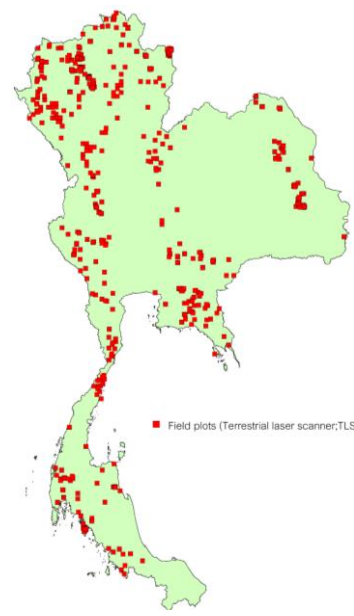
Green Area



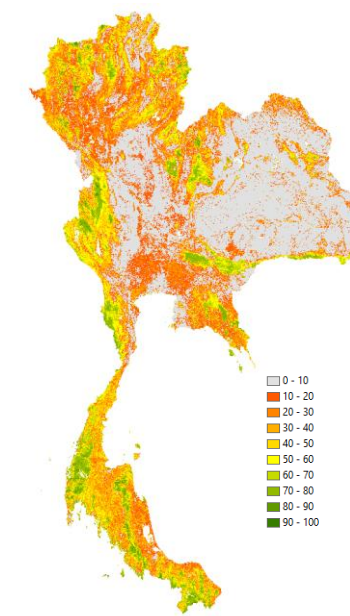
Above Ground Biomass



Uncertainty



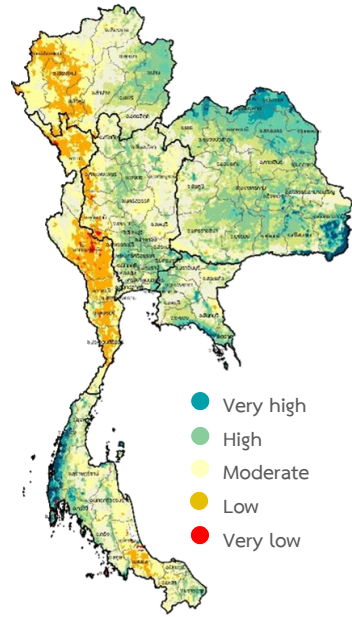
3D Scanning Plots



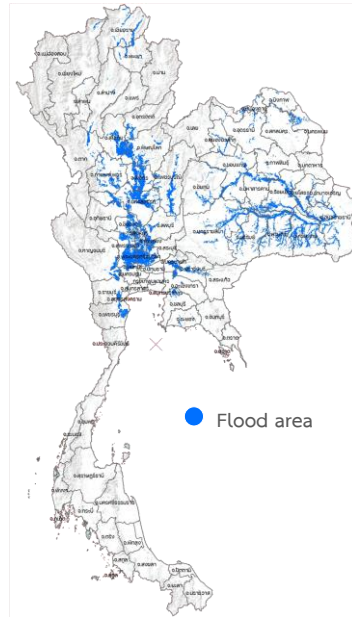
Forest Canopy Density



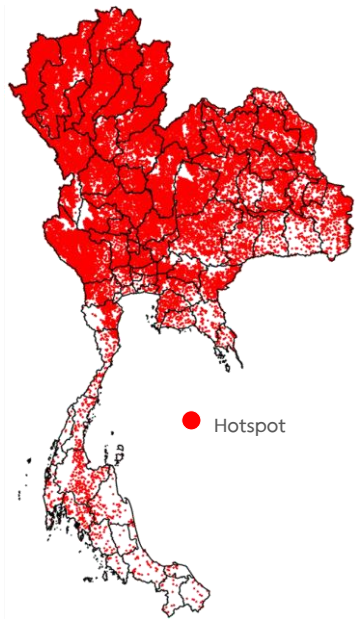
Satellite Basemap (0.5-2m)



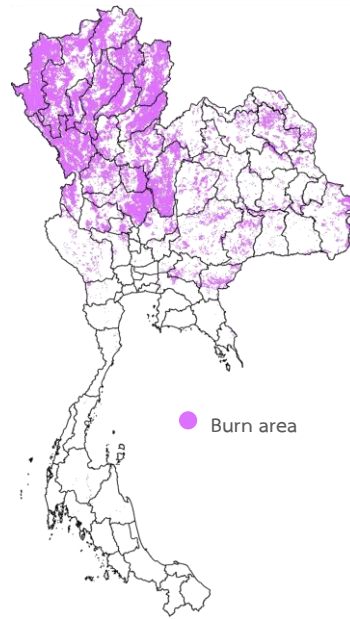
Soil moisture



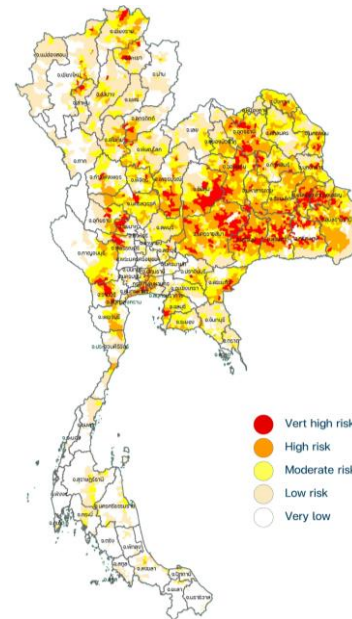
Floods



Hotspot



Burn area



Drought

Additional





The satellite-powered platform for estimating carbon storage to support climate action and sustainable management.



### Carbon dMRV service

Use advance satellite analytics and AI – powered remote sensing to automatically estimate carbon stock.



### Carbon credit at field-scale

Calculate carbon credits at the plot level to support verification and participation in carbon markets.



### MRV Open APIs

Access MRV services and data directly via secure RESTful API.

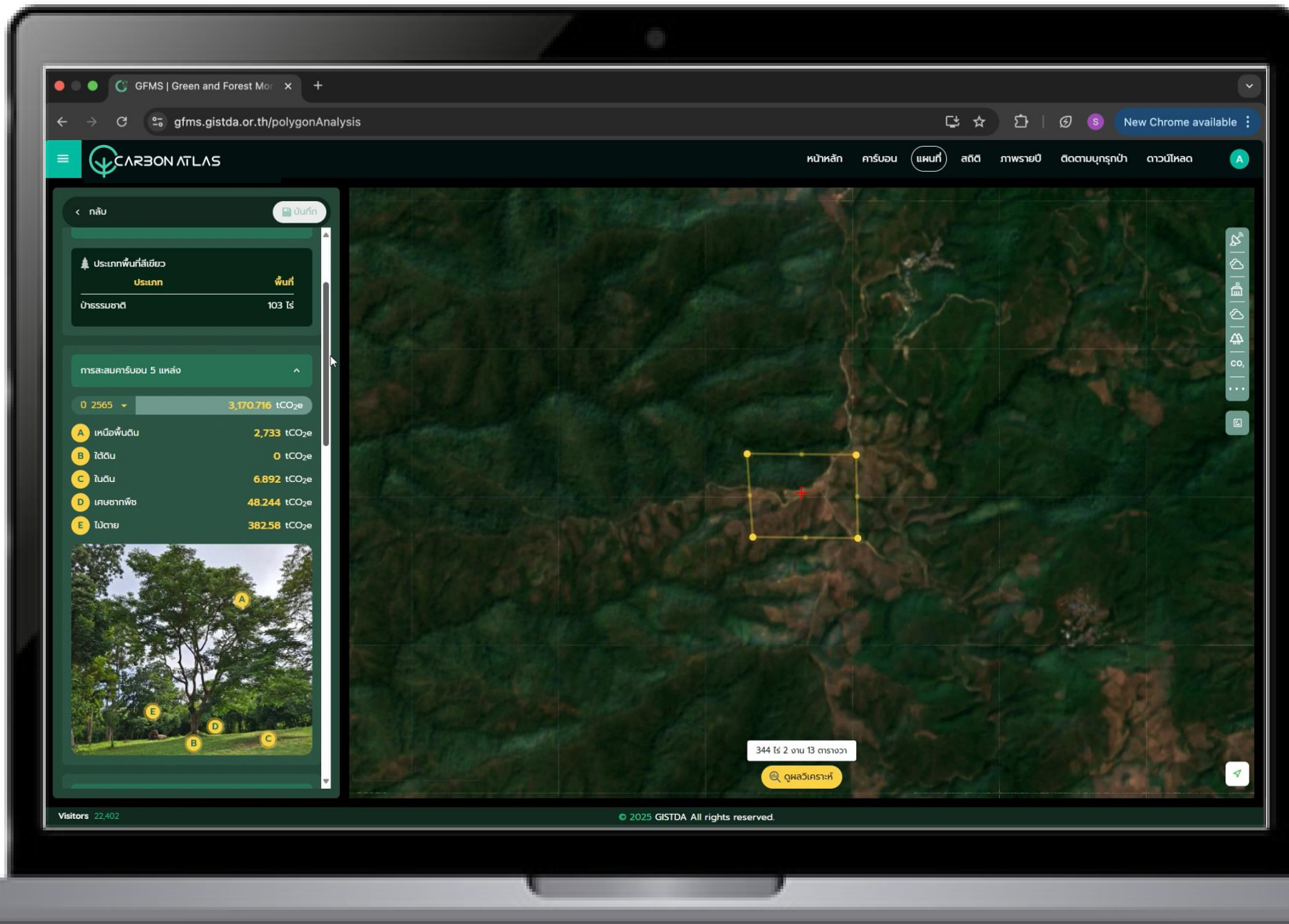
### Contact Us:





For inquiries or to learn more about platform, please contact us:

Phone: +66 2141 4444

Email: [service@gistda.or.th](mailto:service@gistda.or.th)

Website: [www.gistda.or.th](http://www.gistda.or.th)



Customers / Users	Services	Pricing Models
 <i>Landowners</i>	<ul style="list-style-type: none"><li>- Project Development</li><li>- MRV Dashboard</li></ul>	Per-project or Revenue Sharing (per credit)
 <i>Project Developers</i>	<ul style="list-style-type: none"><li>- Project Portfolio Management</li><li>- MRV Report</li></ul>	Per-project or Revenue Sharing (per credit)
 <i>Insurances</i>	<ul style="list-style-type: none"><li>- Smart Dashboard</li><li>- Actionable Insight</li></ul>	Subscription
 <i>Application Developers</i>	<ul style="list-style-type: none"><li>- API Access</li><li>- AI Model Sandbox</li><li>- Analytics Dashboard</li></ul>	Subscription

This document is not contractual. Subject to change without notice.

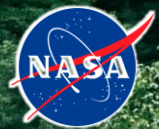
© 2025 GISTDA

All rights reserved.



# Delivering Values from Space

*Partners*



Committee on  
Earth Observation  
Satellites

